

Increasing safety of vulnerable groups in the Lac region, Chad



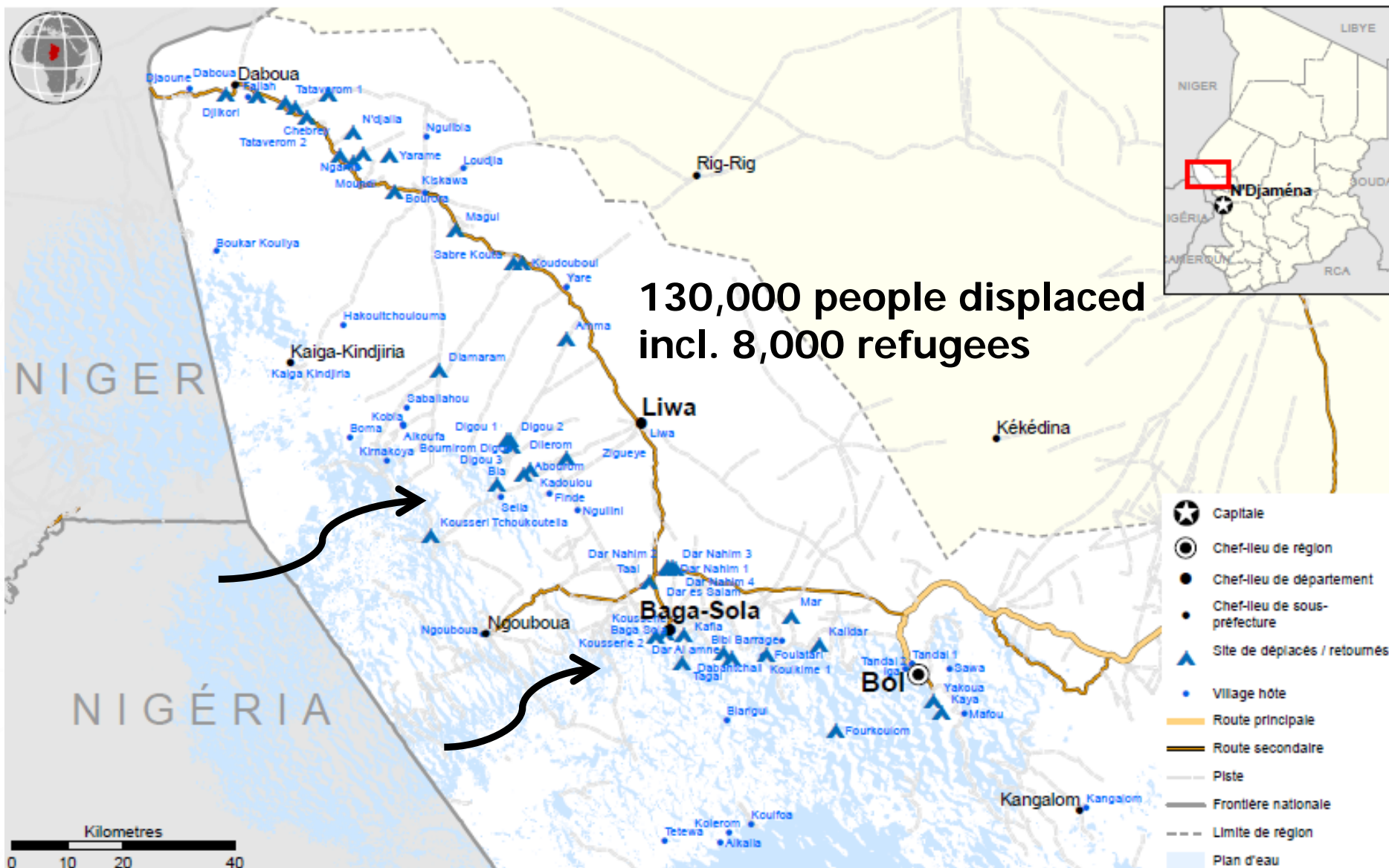
© P. Vermeulen / Handicap International



© W. Daniels pour Handicap International



© B. Franck / Handicap International



Security and armed forces

- ▶ Village safety committees
(« comités de vigilance »)
- ▶ No major attack against civilians since January 2016
- ▶ Fights between Chad army and Boko Haram on the border with Nigeria/Niger
- ▶ FMM: increased military presence

ERW/IEDs threat and victims

- ▶ 14 hazardous areas identified and marked
 - Bol-Baga Sola-Liwa road
 - ERW contamination: rockets, artillery shells
- ▶ Use of IEDs by Boko Haram
- ▶ 18 victims identified
- ▶ Areas and victims reported to the CND (IMSMA)

Focus on IEDs



- Sept 2015 – Sept 2016:
4 accidents registered in
the Lac region due to suicide
bombings or trapped mines
in Baga Sola, Litri, Kaiga
Kindjira, Bohoma



Focus on ERW



© CND, 2016



©Handicap International, 2016



© CND, 2016

HI's response and intervention: RE / surveys

► Mine/ERW/IEDs Risk Education

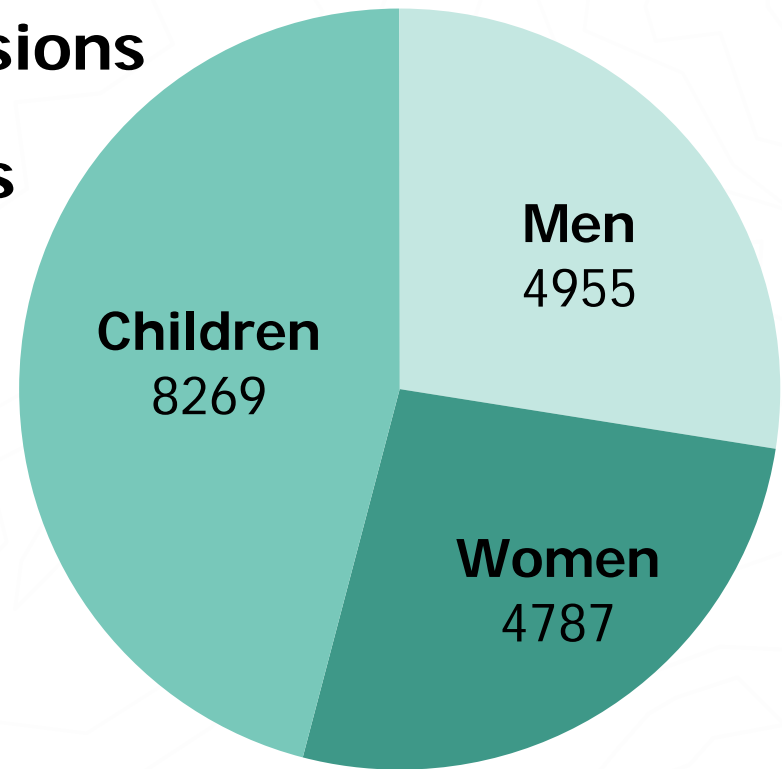
2016: 477 RE sessions

18,011 beneficiaries

► Community-based RE

43 Community Focal Points
raised awareness of 46% of the
beneficiaries

→ **adapted and sustainable
intervention**



RE: targeting at-risk groups

► Local population, IDPs, refugees



Focus on
children



RE session by CFPs,
targeting women of
the neighborhood



RE: targeting key actors

► Raising awareness/training of key community & protection actors

(school staff, local organisations, local authorities)

to maximize impact of HI staff and CFPs interventions



Contamination survey & marking

- ▶ Data collection on contamination
- ▶ Marking of suspected hazardous areas
 - reducing risks of accidents for the population
- ▶ Reporting to CND for further depollution

